
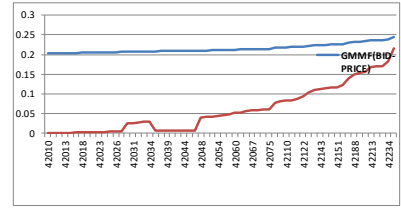


DATE 26/01/2016																												
		Ticker	Current Price	Opening Price	Today's Avg Price (%)	1 day Change in Absolute Terms	1 day Change (%)	Marked Down Price @ Close date	Today's High (%)	Today's Low (%)	Year Low (%)	Year High (%)	YTD Change (%)	EPS EPS	Earnings Yield @ Current Price (%)	P/E Ratio	Financial Year End	Final DPS	Interim DPS	Dividend Yield @ Current Price (%)	Bonus Ratio	Closure Date for Final Dividend	Closure Date for Interim Dividend	Debt Traded	Volume Traded	Value Traded		
Main Board																												
AGRO-PROCESSING																												
Benso Oil Palm Plantation	BOPP	3.00	3.00	-	0.00	0.00%		0.00	0.00	2.50	3.00	20.00%	0.1267	42%	40	December	0.03340	1.11%						0	-			
Cocoa Processing Co. Ltd.	CPC	0.02	0.02	-	0.00	0.00%		0.01	0.01	0.01	0.02	0.00%	-0.0032	-10.85%	n.m.	September	0.0000	0.00%						1	0	-		
Golden Web Ltd	GWEB	0.01	0.01	-	0.00	0.00%		0.00	0.00	0.01	0.01	-66.67%	-0.0073	-71.58%	n.m.	December	0.0000	0.00%						-	0	-		
DISTRIBUTION & TRADING																												
Mechanical Ujof Co. Ltd.	MLC	0.19	0.19	-	0.00	0.00%		0.00	0.00	0.17	0.19	0.00%	-0.0700	-36.83%	n.m.	December	0.01000	5.26%						-	0	-		
Produce Buying Company Ltd.	PBC	0.10	0.10	-	0.00	0.00%		0.13	0.13	0.10	0.10	0.00%	0.0375	37.54%	3	September	0.0080	8.80%						4	0	-		
BANKING & FINANCE																												
Cal Bank Ltd	CAL	1.04	1.05	1.04	-0.01	-0.95%		1.04	1.03	1.00	1.05	4.00%	0.2811	25.11%	4	December	0.05300	5.10%						4	8700	9,048.00		
Ecobank Ghana Ltd.	EBG	7.06	7.06	7.06	0.00	0.00%		7.05	7.05	7.00	7.06	0.71%	1.2800	18.13%	6	December	0.0000	0.00%						3	100	708.00		
Ecobank Transnational Inc.	ETI	0.25	0.25	0.17	0.00	0.00%		0.26	0.26	0.25	0.27	-7.41%	0.0005	32.19%	4	December	0.00000	0.00%						16	1400	241.00		
Enterprise Group Ltd.	EGL	2.41	2.41	3.50	0.00	0.00%		0.00	0.00	2.40	0.27	0.42%	0.2680	11.95%	6	December	0.02500	1.04%						-	100	350.00		
Ghana Commercial Bank Ltd.	GCB	3.75	3.75	0.00	0.00	0.00%		5.02	5.02	3.75	3.79	-1.06%	1.2200	32.53%	4	December	0.21000	5.60%						3	10000	-		
HFC Bank (Ghana) Ltd.	HFC	1.10	1.10	-	0.00	0.00%		0.00	0.00	0.90	1.20	22.22%	0.2632	18.47%	8	December	0.05000	3.18%						-	0	37,500.00		
Mega Africa Capital Ltd	MAC	6.00	6.00	-	0.00	0.00%		0.00	0.00	6.00	6.00	0.00%	3.5825	59.38%	2	December	0.0000	0.00%						-	0	-		
Standard Chartered Bank Gm. Ltd.	SCB	16.30	16.30	16.33	0.00	0.00%		20.12	20.12	16.30	16.30	0.00%	1.2200	7.36%	17	December	1.15000	7.06%						8	410	10,995.00		
SIC Insurance Company Ltd.	SIC	0.16	0.16	0.00	0.01	6.67%		0.14	0.14	0.14	0.16	14.29%	0.0273	17.60%	7	December	0.0000	0.00%				30th march		12	500	-		
Standard Chartered Bank Pref. Shares	SCB PREF	0.71	0.71	-	0.00	0.00%		0.00	0.00	0.71	0.71	0.00%	0.0000	0.00%	0	December	0.06400	9.04%						-	0	-		
Societe Generale Ghana Limited	SGGEGH	0.82	0.82	-	0.00	0.00%		0.00	0.00	0.80	0.82	2.50%	0.1492	18.20%	6	December	0.05000	7.32%						-	0	-		
Trust Bank Ltd. (The Gambia)	TBL	0.37	0.37	-	0.00	0.00%		0.00	0.00	0.37	0.37	0.00%	0.0600	16.22%	4	December	0.00200	1.58%						-	0	-		
UT Bank Ltd	UTB	0.11	0.11	-	0.00	0.00%		0.20	0.20	0.10	0.12	10.00%	0.0240	21.83%	7	December	0.02000	18.18%						23	0	-		
FOOD & BEVERAGES																												
Guinness Ghana Breweries Ltd.	GGBL	1.99	1.99	-	0.00	0.00%		3.21	3.20	1.99	1.99	0.00%	-0.0118	-30.24%	n.m.	June	0.0000	0.00%						3	0	-		
Fan Milk Ltd.	FML	7.38	7.38	7.38	0.00	0.00%		5.25	5.25	7.35	7.38	0.41%	0.1295	1.79%	41	December	0.09000	1.22%						1	600	4,428.00		
ICT																												
Clydestone (Ghana) Ltd.	CLYD	0.03	0.03	-	0.00	0.00%		0.00	0.00	0.03	0.03	0.00%	0.0021	7.00%	14	December	0.00000	0.00%						-	0	-		
Transaction Solutions (Ghana) Ltd.	TRANSOL	0.03	0.03	-	0.00	0.00%		0.00	0.00	0.03	0.03	0.00%	0.0073	24.45%	4	December	0.00000	0.00%						-	0	-		
MANUFACTURING																												
Aluworks Limited	ALW	0.07	0.07	-	0.00	0.00%		0.00	0.00	0.07	0.14	-30.00%	-0.0215	-4.31	n.m.	December	0.00000	0.00%						-	0	-		
Pioneer Kitchenware Ltd.	PKL	0.05	0.05	-	0.00	0.00%		0.00	0.00	0.05	0.05	0.00%	-0.0086	-4.17	n.m.	December	0.00000	0.00%						-	0	-		
PZ Cussons Ghana Ltd.	PZ	0.33	0.33	-	0.00	0.00%		0.00	0.00	0.33	0.34	-2.94%	-0.0053	-4.02	n.m.	May	0.02260	6.85%						-	0	-		
Unilever Ghana Ltd.	UNIL	8.50	8.50	8.50	0.00	0.00%		0.00	0.00	8.50	8.50	0.00%	0.8103	0.10	9	December	0.25600	3.01%						-	56000	5,066,000.00		
MINING																												
AngloGold Ashanti Ltd.	AGA	37.00	37.00	-	0.00	0.00%		0.00	0.00	37.00	37.00	0.00%	0.4501	1.22%	n.m.	December	0.00000	0.00%						-	0	-		
AngloGold Ashanti Depository Shares	AADS	0.52	0.52	-	0.00	0.00%		0.00	0.00	0.52	0.52	0.00%	0.0000	0.00%	0	December	0.00000	0.00%						-	0	-		
Golden Star Resources Ltd.	GSR	1.99	1.99	-	0.00	0.00%		0.00	0.00	1.99	1.99	0.00%	-0.7700	-38.69%	-3	December	0.00000	0.00%						-	0	-		
Tullow Oil Plc	TLW	20.00	20.00	-	0.00	0.00%		0.00	0.00	20.00	20.00	0.00%	-5.4945	-19.62%	n.m.	December	0.00000	0.00%						-	0	-		
PHARMACEUTICALS																												
Ayrton Drug Manufacturing Ltd.	AYRTN	0.13	0.13	-	0.00	0.00%		0.18	0.18	0.12	0.18	-37.78%	-0.0108	-8.31%	-17	September	0.00000	0.00%						1	0	-		
Starwin Products Ltd.	SPL	0.02	0.02	-	0.00	0.00%		0.00	0.00	0.02	0.04	-50.00%	0.0020	10.00%	10	December	0.00000	0.00%						-	0	-		
PRINTING & PUBLISHING																												
African Champion Ltd	AC	0.02	0.02	-	0.00	0.00%		0.00	0.00	0.02	0.02	0.00%	-0.0693	-34.15%	n.m.	December	0.00000	0.00%						-	0	-		
Camelot Ghana Ltd.	CMLT	0.12	0.12	-	0.00	0.00%		0.00	0.00	0.12	7.32	0.00%	0.0388	32.4%	3	December	0.00000	0.00%						-	0	-		
Sam Woode Ltd.	SWL	0.04	0.04	-	0.00	0.00%		0.00	0.00	0.04	0.04	0.00%	0.0033	8.2%	12	December	0.00400	10.00%						-	0	-		
PETROLEUM																												
Ghana Oil Company Limited	GOIL	1.45	1.44	1.45	0.01	0.69%		1.06	1.06	1.38	1.46	3.57%	0.0800	5.51%	15	December	0.01600	1.10%						4	13100	10,995.00		
Total Petroleum Ghana Ltd.	TOTAL	5.15	5.15	-	0.00	0.00%		0.00	0.00	5.10	5.15	0.98%	0.5244	10.10%	10	December	0.09600	1.91%						-	0	-		
SAV																												
Samba Foods Limited	SAMBA	0.73	0.73	-	0.00	0.00%		0.00	0.00	0.73	0.73	0.00%													-	0	-	
Meridian Marshalls Holding Company	MNH	0.11	0.11	-	0.00	0.00%		0.00	0.00	0.11	0.11	0.00%													-	0	-	
HL	HORDS	0.08	0.08	-	0.00	0.00%		0.00	0.00	0.08	0.08	-11.11%													-	0	-	
EXCHANGE TRADED FUNDS																												
NewGold ETF	GLD	38.80	38.80	-	0.00	0.00%		0.00	0.00	38.80	39.00	-0.51%	0.0000			0									-	0	-	
																AVERAGE P/E RATIO	13											

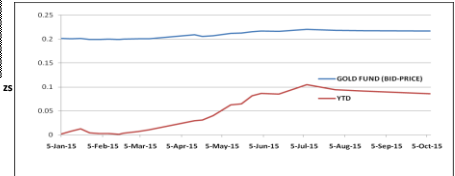


GCFM Daily Market Snapshot - January 26, 2016

	Current		Previous	
	Bid Price	YTD	Bid Price	YTD
Gold Money Market Fund	0.2614	1.99%	0.2600	1.46%
Gold Fund	0.2178	0.21%	0.2178	0.21%



	Current Value	Previous Value	1 Day Change	Year Start	YTD Change
Market Capitalisation (GHS 'million)	56,747.66	56,741.36	0.01%	57,116.87	-0.65%
Market Capitalisation (USD 'million)	14,933.60	14,931.94	0.01%	15,436.99	-3.26%
Financial Stock Index	1,935.64	1,933.98	0.09%	1,930.06	0.29%
GSE Composite Index	1,999.84	1,998.68	0.06%	1,994.91	0.25%
GCFM All-Share Index	1,913.56	1,913.56	0.00%	1,943.51	-1.54%
GCFM Dollar Equivalent	794.19	794.19	0.00%	810.83	-2.05%
	Current	Previous	Change %		
Total Volume Traded	630,910	2,379,160	-73.48%		
Total Value Traded (GHC)	5,144,031.00	7,679,511.72	-33.02%		
Number of Deals					
Gainners	2	4	-50.00%		
Losers	1	3	-66.67%		



Top Gainers / Losers in % Terms

	Top Gainers			Top Losers			
	Previous	Current	Change %	Previous	Current	Change %	
GOIL	1.44	1.45	0.69%	CAL	1.05	1.04	-0.95%
SIC	0.15	0.16	6.67%				#DIV/0!
			#DIV/0!				#DIV/0!

3 Most Actively Traded Stocks

	Deals	Volume	Value (GHS)
UNIL		596,000	5,066,000.00
GOIL		13,100	18,995.00
GCB		10,000	37,500.00

3 Most Actively Traded Sectors

Subsector	Volume Traded
MANUFACTURING	596000
BANKING & FINANCE	21210
PETROLEUM	13100

Company Interim and Full Year Results Announcements Today

Company and Result	Turnover (GHSm)- FY14	Turnover (GHSm)- FY13	Change (%)	PBT (GHSm)-FY14	PBT (GHSm)-FY13	Change (%)	TAX (GHSm)-FY14	TAX (GHSm)-FY13	Change (%)	PAT (GHSm)-FY14
AYRTON	16.97	13.42	26%	0.45	-0.45	-200%	0.19	0.56	-66%	0.26
BOPP	52.16	35.44	47%	12.42	6.13	103%	0.13	0.32	-59%	12.29
CAL	324.96	219.15	48%	198.55	127.60	56%	55.42	34.06	63%	143.13
CMLT	4.42	3.96	12%	0.12	0.27	-56%	0.033	0.20	-83%	0.09
FML	177.49	138.80	28%	22.08	29.65	-26%	6.68	8.28	-19%	15.40
UNIL	418.45	323.41	27%	-8.64	16.80	-103%	0.32	4.73	-93%	-4.31

Company Dividend and Bonus Announcements Today

	Current	Previous	Year Start	Change on Year Start
Banks	3.85	3.8	3,3100	16.31%
Parallel Market (Black Market)	4	4.1	3,3000	21.21%

BoG Rates

	Buy	Sell	Year Start	Change on Year Start
GHS/USD	3.8226	3.8264	3,7804	1.12%
GHS/POUND	5.4472	5.4538	5,5655	-2.13%
GHS/EURO	4.1408	4.1433	4,0980	1.04%
GHS/CFA	158.32	158.41	159.97	-1.03%

Interest Rate	Current	Previous
30-day LIBOR	24.1	24.32
91-day LIBOR	25.41	26.04
182-day LIBOR	25.85	25.85

Inflation Rate	Year-on-Year Change (%)	12-Month Average Change (%)
Dec-15		17.70%

Commodities	Current Price	Previous Price	Change (%)
Oil Brent Crude (USD/bbl)	29.59	30.61	-3.33%
Gold (USD/t oz)	1,114.85	1,096.07	1.71%
Cocoa (USD/MT)	2,819.00	2,855.06	-1.26%
Coffee (USD/lb)	116.45	114.40	1.79%
Sugar (USD/lb)	14.10	14.57	-3.23%

Treasury Bills Interest Rate	Latest Stop Rate (%)	Previous Stop Rate (%)
91-day Treasury Bill Rate (%)	26.04	25.04
182-day Treasury Bill Rate (%)	25.85	25.85
1-year Treasury Bill Rate (%)	22.50	22.50
2-year Treasury Bill Rate (%)	23.00	23.00

	Latest Rate (%)	Previous Rate (%)
Monetary Policy Rate (MPR)	24.00	25.00
Cash Reserve Ratio For Private Sector	10.00	11.00
Cash Reserve Ratio For Public Sector	10.00	11.00
Liquidity Ratio (LR)		
Net Foreign Exchange Open Position (NOP)		

Market News

Bank of Ghana keeps benchmark interest rate at 26 pct

IMF backs gov't to snub labour

Six institutions owe GRA Ghs245.5 million

33 firms bid for ecg -Including 23 foreign companies

Market Capitalisation of GCFM Index * -January 26 2016

	Equities	closing price-GHS	Issued Shares(mil)	Market Capitalisation(mil)
1	ACI	0.02	36.50	0.73
	AGA	37.00	404.04	14,949.53
2	AADs in share	0.52	0.98	0.51
3	ALW	0.07	236.69	16.57
4	AYRTN	0.13	215.00	27.95
5	BOPP	3.00	34.80	104.40
6	CAL	1.04	548.26	570.19
7	CLYD	0.03	34.00	1.02
8	CMLT	0.12	6.54	0.79
9	CPC	0.02	2,038.07	40.76
10	EBG	7.06	293.23	2,070.19
11	EGL	2.41	131.90	317.88
12	ETI	0.25	21,313.96	5,328.49
13	FML	7.38	116.21	857.61
14	GCB	3.75	265.00	993.75
15	GGBL	1.99	211.34	420.56
16	GOIL	1.45	252.22	365.72
17	GSR	1.99	255.43	508.30
18	GWEB	0.01	35.00	0.35
19	HFC	1.10	297.36	327.10
20	MAC	6.00	8.64	51.85
21	MLC	0.19	50.10	9.52
22	PKL	0.05	33.34	1.67
23	PBC	0.10	480.00	48.00
24	PZC	0.33	168.00	55.44
25	SCB	16.30	115.51	1,882.77
26	SIC	0.16	195.65	31.30
27	SPL	0.02	259.81	5.20
28	SOGEH	0.82	367.28	301.17
29	SWL	0.04	21.83	0.87
30	TBL	0.37	200.00	74.00
31	TOTAL	5.15	111.87	576.15
32	TRANSOL	0.03	80.00	2.40
33	TLW	28.00	906.96	25,394.99
34	UNIL	8.50	62.50	531.25
35	UTB	0.11	456.31	50.19
	TOTAL			55,868.98
	Preference Shares			
	Standard Cha	0.71	17.48	12.41
	Exchange Tradeable Funds(ETFs)			-
	NewGold	0.73	0.40	0.29